



DIMENSIONS:

- DNC47 - 4.5"D x 7"L
- DNC48 - 4"D x 7"L
- DNC512 - 5"Dia x 12"L
- DNC67 - 6"D x 7"L
- DNC69 - 6"D x 9"L
- DNC610 - 6"D x 10"L
- DNC612 - 6"D x 12"L
- DNC812 - 8"D x 12"L
- DNC814 - 8"D x 14"L
- DNC818 - 8"D x 18"L
- DNC1015 - 10"D x 15"L

Project:	
Location(s):	
Type:	
Qty:	
Date:	

PRODUCT SPECIFICATIONS

Description:
Aluminum Cylinder Downlight with Different Mounting Options

Materials:
Aluminum Housing

Finish:
Powder Coated

Lens:
Included in Options

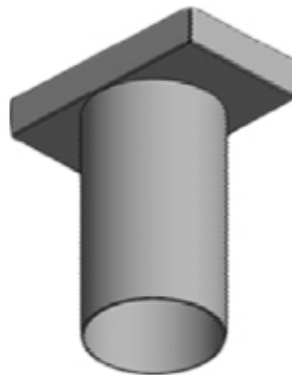
LED:
Integrated LED Array

Listing:
Damp List to Meet UL1598 Standard

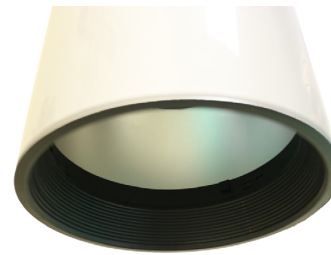
Driver Info:
120V

Installation Information:
Install by Qualified Electrician

Warranty:
2 Years From Date of Shipment



Shown w/ EM Back Box required in fixtures under 15"L



Shown w/ Black Baffle Option



Pendant Mount

ORDER INFORMATION
Call Factory For Fluorescent Options

MODEL		FINISH	WATTAGE	KELVIN	OPTIONS
<u>Model</u>	DNC69 DNC610 DNC47 DNC48 DNC56 DNC58 DNC59 DNC512 DNC67	<u>Finish</u> DB - Dark Bronze BL - Black AS - Anodized Silver WH - White CC - Custom Color	<u>Wattage</u> LED5 - 5W LED 500 Lms LED10 - 10W LED 1000 Lms LED15 - 15W LED 1500 Lms LED20 - 20W LED 2000 Lms <u>Wattage (512)</u> LED30 - 30W LED 2600 Lms <u>Wattage (DNC812,814,818)</u> LED25 - 25W LED 2500 Lms LED30 - 30W LED 3000 Lms <u>Wattage (DNC1015)</u> LED45 - 45W LED 4500 Lms LED55 - 55W LED 5500 Lms	<u>Kelvin</u> 30 - 30K 40 - 40K 50 - 50K	<u>Options</u> DV - 120/277V - Dual Volt EM - Emergency Battery Backup <i>(back box required for fixtures under 15"L)</i> PC - Photocell CMXX - Cord Mount* PMXX - Pendant Mount* <i>replace xx with pendant/cord length</i> BLB - Black Baffle WHB - White Baffle REF - Specular Reflector LB - Lens Bottom (Wet Listed)