

# WALL SCONCE EDGE



**DIMENSIONS:**  
6"W x 8"H x 4"E

Project:	
Location(s):	
Type:	
Qty:	
Date:	

## PRODUCT SPECIFICATIONS

**Description:**

A Squared Wall Sconce with Different Lens and Sizing Options

**Materials:**

Aluminum Housing

**Finish:**

Powder Coated

**Lens:**

Frosted Polycarbonate

**LED:**

Integrated LED Array

**Listing:**

Damp List to Meet UL1598 Standard

**Driver Info:**

120V

**Installation Information:**

Install by Qualified Electrician

**Warranty:**

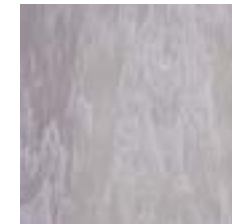
2 Years From Date of Shipment



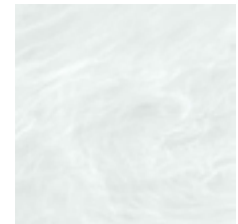
Pattern 0



Pattern 1



Alabaster



White Alabaster

## ORDER INFORMATION

Call Factory For Fluorescent Options

MODEL	PATTERN	FINISH	WATTAGE	KELVIN	LENS	OPTIONS
<b>Model</b> EDG68	<b>Pattern</b> 0 - Pattern 0 1 - Pattern 1	<b>Finish</b> DB - Dark Bronze BL - Black AS - Anodized Silver WH - White CC - Custom Color	<b>Wattage</b> LED10 - 10W LED 1000 Lms	<b>Kelvin</b> 30 - 30K 40 - 40K 50 - 50K	<b>Lens</b> WA - White Acrylic FP - Frosted Polycarbonate WP - White Polycarbonate ALB - Alabaster WALB - White Alabaster Other alabaster lens options available. Contact factory	<b>Options</b> OB - Open Bottom DIM0-10V - 0-10V Dimmable DV - Dual Volt 120/277

