

**CEILING FLUSH
C88**

DIVINE LIGHTING
FABRICATION & POWDER COATING LLC

Standard Product Specifications

Materials:

Aluminum Housing

Finish:

Powder Coated

Lens:

Clear Prismatic Polycarbonate

LED:

Integrated LED Array

Listing:

Wet List to Meet UL 1598 Standard

Driver Info:

120/277V

Installation Information:

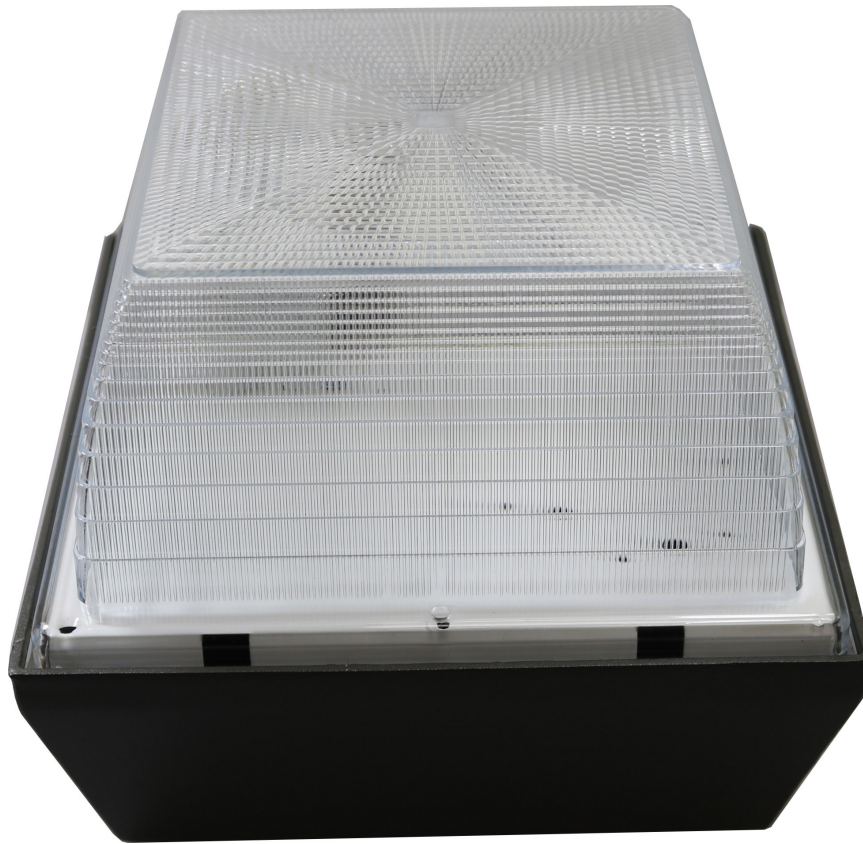
Install by Qualified Electrician

Warranty:

2 Years From Date of Shipment

DIMENSIONS:

9”Sq. x 8.5”E



MODEL	FINISH	WATTAGE	KELVIN	OPTIONS
<u>Model</u> C88	<u>Finish</u> DB - Dark Bronze BL - Black AS - Anodized Silver WH- White CC - Custom Color	<u>Wattage</u> LED20 - 20W LED 2000 Lms LED40 - 40W LED 4000 Lms	<u>Kelvin</u> 30 - 30K 35 - 35K 40 - 40K 50 - 50K	<u>Options</u> PC - Photocell MOT - Motion Sensing EM10 - 1000 Lms Emergency

Divine Lighting Fabrication & Powder Coating, LLC.
Conroe, TX

<http://www.divinelighting.net>
customerservice@divinelighting.net

PH: 936-494-3900
FX: 936-494-3910

As led performance and lumen output becomes more efficient, specifications are subject to change without notice

REV 91123 1140 ACE