

**LINEAR
4802**



DIMENSIONS:
4802 - 2.75"W x 1.75"(body)
2.875"(w/socket) 5"(ASRW)H

Project:	
Location(s):	
Type:	
Qty:	
Date:	

PRODUCT SPECIFICATIONS

Description:
Open Light Linear Fixture

Materials:
Steel Metal

Finish:
Powder Coat

Lens:
White Polycarbonate

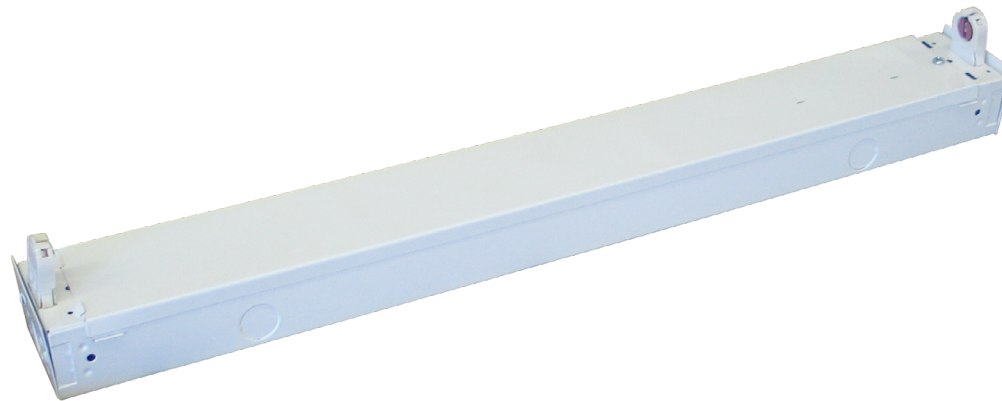
LED:
Integrated LED Array
Fluorescent Lamps not Included

Listing:
Damp List to Meet UL1598 Standard

Driver Info:
120V

Installation Information:
Install by Qualified Electrician

Warranty:
1 Years From Date of Shipment



ORDER INFORMATION
Call Factory For Fluorescent Options

MODEL	FINISH	WATTAGE	KELVIN	LENS	OPTIONS
Model 4802 4802SM	Finish DB - Dark Bronze BL - Black AS - Anodized Silver WH - White CC - Custom Color	Wattage (3ft LED) LED23 - 23W LED 2300 Lms Wattage (4ft LED) LED36 - 36W LED 3600 Lms Wattage (Flourecent) (1) 25 T8 (2) 25 T8 (1) 21 T5 (2) 21 T5	Kelvin 30 - 30K 40 - 40K 50 - 50K	Lens WP - White Polycarbonate	Options MOT - Motion Sensor EM5 - 500 Lms Emergency EM12 - 1200 Lms Emergency DIM - 0-10V Dimmable SS - Stainless Steel Clips BR - Basic Reflector WR - Wide Distribution Reflector ASRW - Asymetrical White Reflector ASRS - Asymetrical Silver Reflector SMRW - Symetrical White Reflector SMRS - Asymetrical Silver Reflector CH - Chain Hung (8' per Fixture)