

WALLPACK INVUE



DIMENSIONS:
19.5"W x 11.5"H x 18.5"E

Project:	
Location(s):	
Type:	
Qty:	
Date:	

PRODUCT SPECIFICATIONS

Description:

Large Rounded Wallpack with
Decorative Grilled Top Pattern

Materials:

Die Cast Aluminum

Finish:

Powder Coated

Lens:

Clear Polycarbonate

LED:

Integrated LED Array

Listing:

Wet List to Meet UL 1598 Standard

Driver Info:

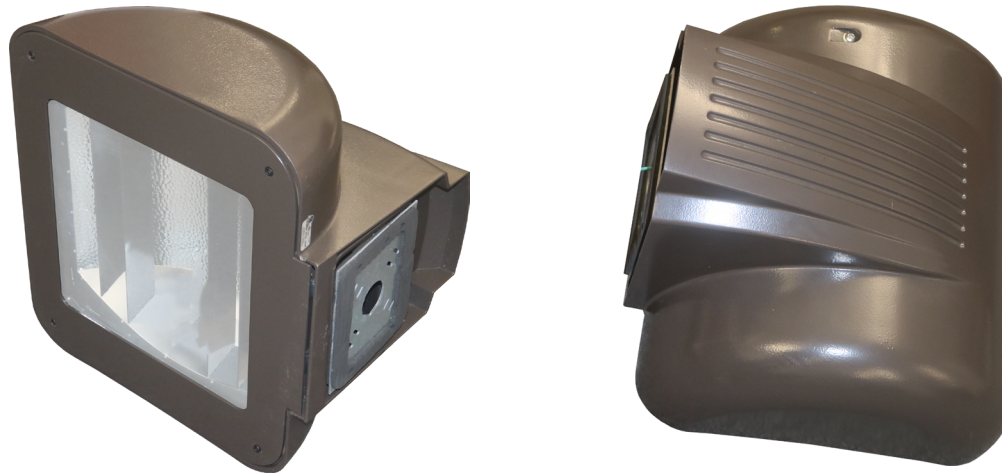
120/277V

Installation Information:

Install by Qualified Electrician

Warranty:

2 Years From Date of Shipment



ORDER INFORMATION

Call Factory For Fluorescent Options

MODEL	FINISH	WATTAGE	KELVIN	OPTIONS
Model INVUE	Finish DB - Dark Bronze BL - Black AS - Anodized Silver WH - White CC - Custom Color	Wattage LED75 - 75W LED 8500 Lms	Kelvin 30 - 30K 35 - 35K 40 - 40K 50 - 50K	Options DIM0-10V - 0-10V Dimmable EM5 - 500 Lm Emergency Backup EM12 - 1200 Lm Emergency Backup